

Original eine  
Quarte höher

# CRUX FIDELIS à8

Ruggiero Giovanelli  
(c.1560- 1625)

Canto I

Crux fi - de - - - - - lis, crux fi - de - lis,

Alto I

Crux fi - de - - - - - lis, crux fi - de - lis, crux fi -

Tenor I

8 Crux fi - de - - - - - lis, crux fi - de - lis,

Basso I

8 Crux fi - de - - - - - lis, crux fi -

Canto II

Crux fi - de - - -

Alto II

8 Crux fi - de - - - - -

Tenor II

8 Crux fi - de - - - - -

Basso II

Crux fi - de - - -

7

fi - de - - - - - lis, in - - ter om - nes ar - - - bor u - na no - - - bi -

de - - - - - lis, in - - ter om - nes ar - - - bor u - na no - - - - - bi -

8 crux fi - de - - - - - lis, in - - ter om - nes ar - - - bor u - - na no - - - bi -

8 de - - - - - lis, in - - ter om - nes ar - bor u - na no - - - bi -

- - - lis

8 - - - lis

8 - - - lis,

- - - lis,

14

lis: nul - - la sil - va

lis: nul - - la sil - va

8 lis: nul - - la sil - va

8 lis: nul - - la sil - va

in - ter om - nes ar - bor u - na no - - - bi - lis: nul - la

8 in - ter om - nes ar - bor u - na no - - - bi - lis: nul - la

8 in - ter om - nes ar - bor u - na no - - - bi - lis: nul - la

in - ter om - nes ar - bor u - na no - - - bi - lis: nul - la

21

ta - - lem pro-fert, fron - de, flo - - - -

ta - - lem pro-fert, fron - de, flo - - - re,

8 ta - - lem pro - fert,\_\_\_ fron - - - de, flo - - - -

8 ta - - lem pro-fert, fron - - - de, flo - - -

sil - va ta - lem pro-fert fron - de,

8 sil - va ta - lem pro-fert fron - de,

8 sil - va ta - lem pro-fert fron - - - - de,

sil - va ta - lem pro-fert fron - - - de,



- re, ger - - - - - mi - ne, flo - - - - - re, ger - - - - - mi - ne.  
 ger - - - - - mi - ne, flo - re, ger - - - - - mi - ne.  
 8 - re, ger - - - - - ne, mi - ne, flo - - - - - re, ger - - - - - mi - ne.  
 8 - re, ger - mi - ne, flo - - - - - re, ger - - - - - mi - ne.  
 flo - - - - - re, ger - mi - ne.  
 8 flo - - - - - re, ger - - - - - mi - ne.  
 8 flo - re, flo - - - - - re, ger - mi - ne.  
 flo - re, ger - - - - - mi - ne.



Dul - ce li - gnum, dul - ces cla - vos, dul - ce pon - dus su - sti - net,  
 Dul - ce li - gnum, dul - ces cla - vos, dul - ce pon - dus su - sti - net,  
 8 Dul - ce li - gnum, dul - ces cla - vos, dul - ce pon - dus su - sti - net,  
 8 Dul - ce li - gnum, dul - ces cla - vos, dul - ce pon - dus su - sti - net,  
 Dul - ce  
 8 Dul - ce  
 Dul - ce  
 Dul - ce

dul - ce pon - dus su - sti -  
 dul - ce pon - dus su - - sti -  
 8 dul - ce pon - dus su - - sti -  
 8 dul - ce pon - dus su - - - sti -  
 li - gnum, dul - ces cla - vos, dul - ce pon - dus su - sti - net,  
 8 li - gnum, dul - ces cla - vos, dul - ce pon - dus su - sti - net,  
 8 li - gnum, dul - ces cla - vos, dul - ce pon - dus su - sti - net,  
 li - gnum, dul - ces cla - vos, dul - ce pon - dus su - sti - net,

net, dul - ce pon - dus su - sti - net.  
 net, dul - ce pon - dus su - sti - net.  
 8 net, dul - ce pon - dus su - sti - net.  
 8 net, dul - ce pon - dus su - sti - net.  
 dul - ce pon - dus, dul - ce pon - dus su - sti - net.  
 8 dul - ce pon - dus su - sti - net, su - sti - net.  
 8 dul - ce pon - dus su - sti - net, su - sti - net.  
 dul - ce pon - dus su - sti - net.

# CRUX FIDELIS à8

### Original eine Quarte höher

Ruggiero Giovanelli

(c.1560- 1625)

# Canto I

Crux      fi - de -      -      -      -      -      -      -      lis,      crux   fi -

6

[illegible]

de - lis,            fi - de - - - - - lis, in - - ter om - nes    ar - - -

11

bor u - na      no -      -      bi - lis:                      nul -      - la sil - va

21

ta - - lem pro - fert,      fron - de,      flo - -

27

- - - - - re, ger - - - - - mi - ne, flo -

31

- - - - re, ger - - - - mi- ne. Dul - ce li - gnum,

36

dul - ces      cla - vos,      dul - ce      pon - dus      su - sti - net,

42

dul - ce      pon - dus      su - sti - net,

52

dul - - ce pon - dus su - - - - - sti - net.

# CRUX FIDELIS à8

Original eine Quarte höher

Ruggiero Giovannelli

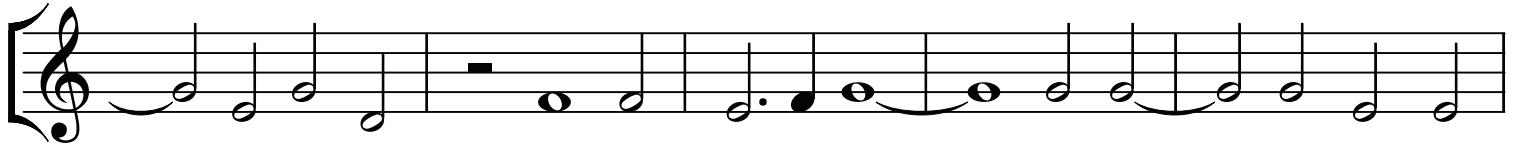
(c.1560- 1625)

Alto I



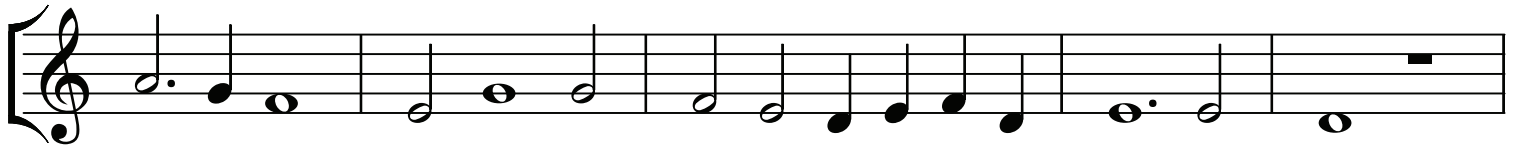
Crux fi - de - - - - - lis, crux

5



fi - de - lis, crux fi - de - - - - - lis, in - - ter om - nes

10



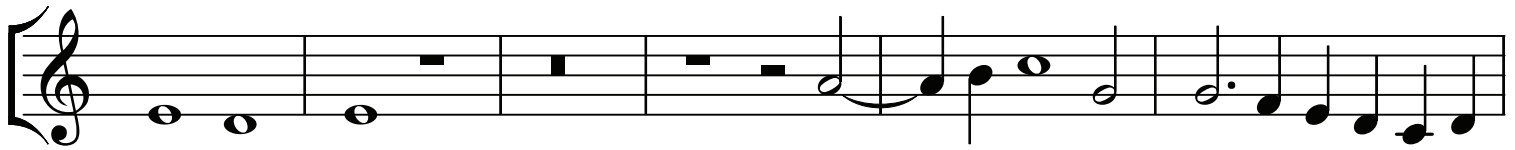
ar - - - bor u - na no - - - - - bi - lis:

15



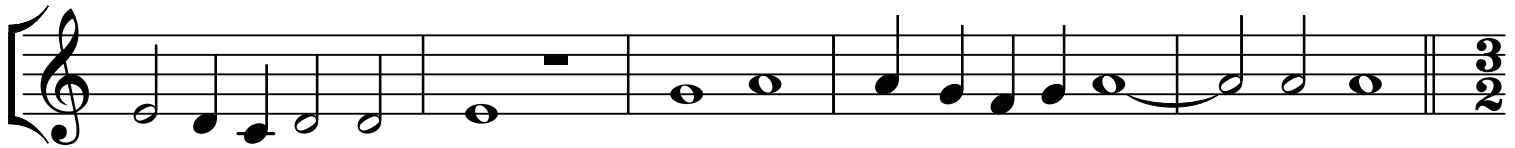
nul - - la sil - va ta - - lem pro - fert,

23



fron - - de, flo - - - - re, ger - - - - -

29



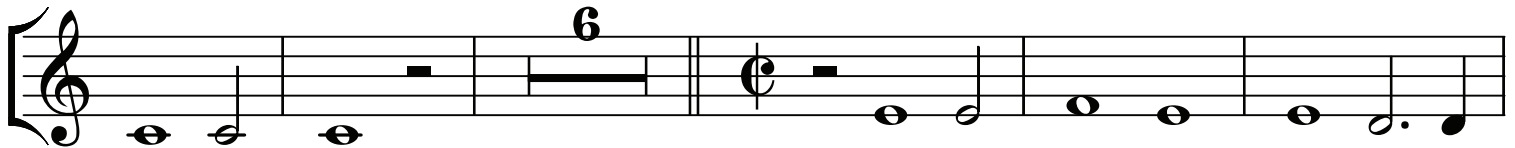
- - - - mi - ne, flo - re, ger - - - - - mi - ne.

34



Dul - ce li - gnum, dul - ces cla - vos, dul - ce pon - dus

40



su - sti - net, dul - ce pon - dus su - - sti -

51



net, dul - - ce pon - dus su - sti - net.

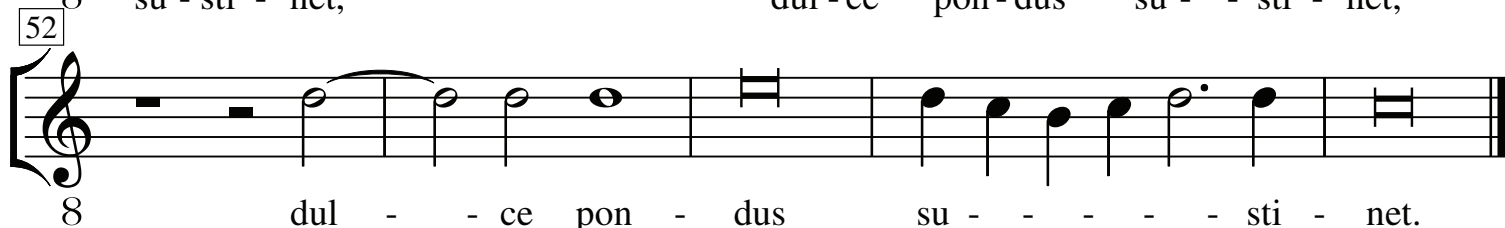
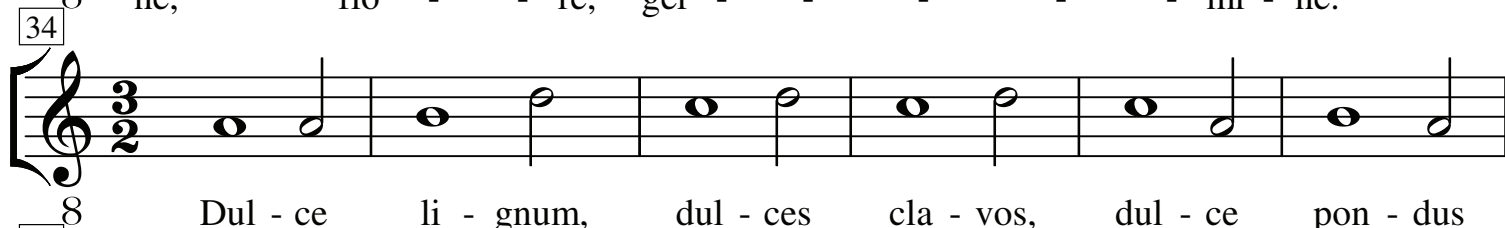
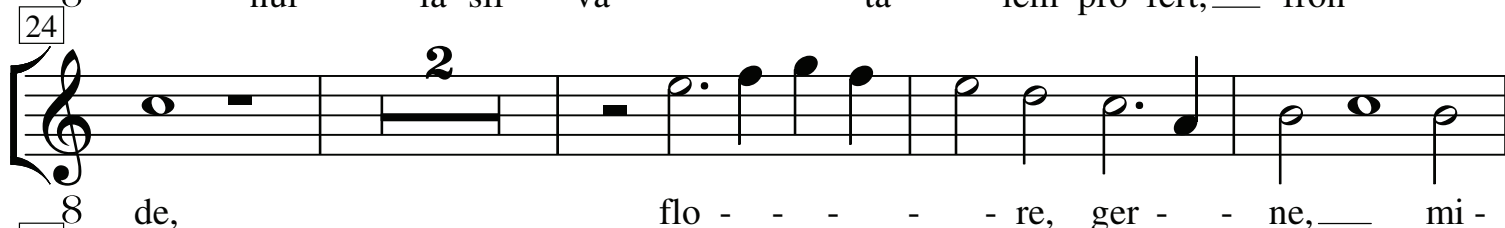
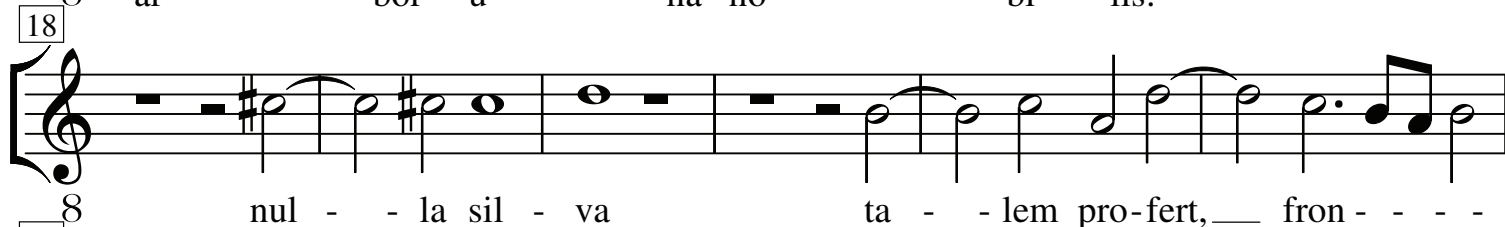
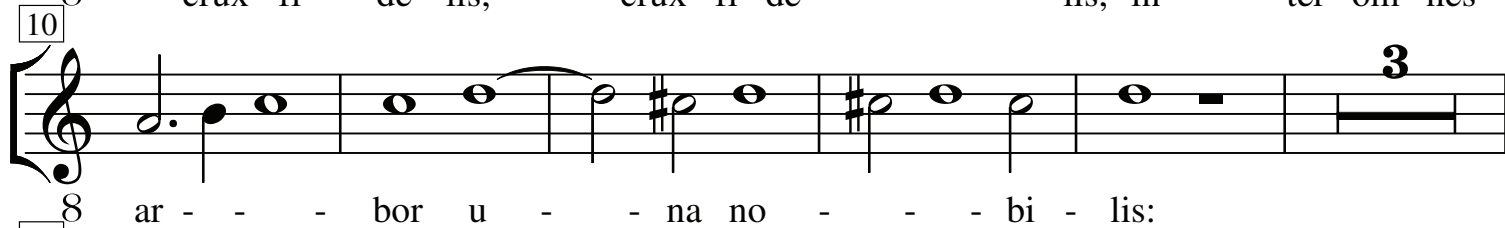
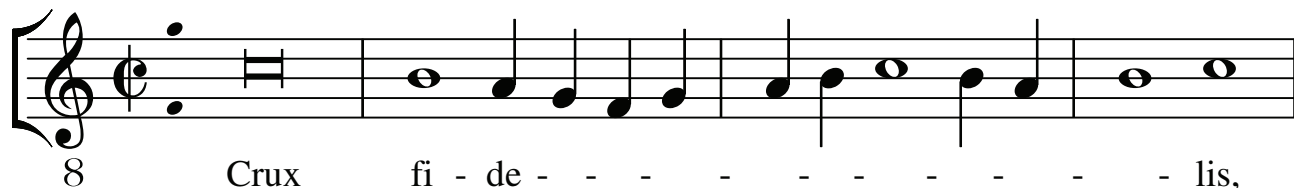
# CRUX FIDELIS à8

Original eine Quarte höher

Ruggiero Giovannelli

(c.1560- 1625)

## Tenor I



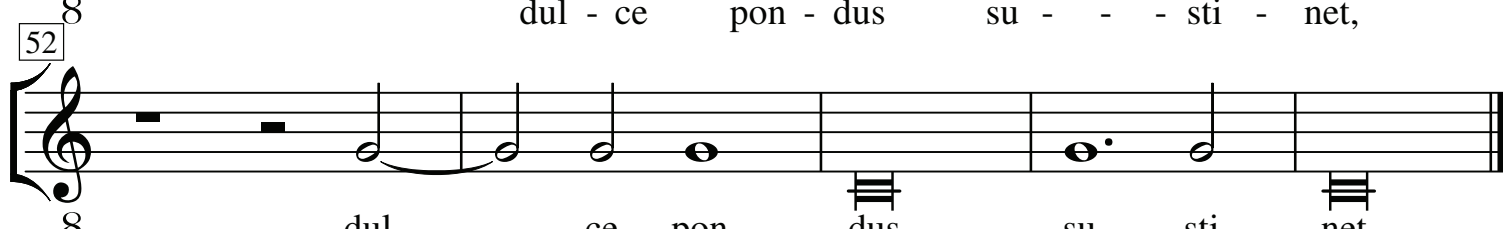
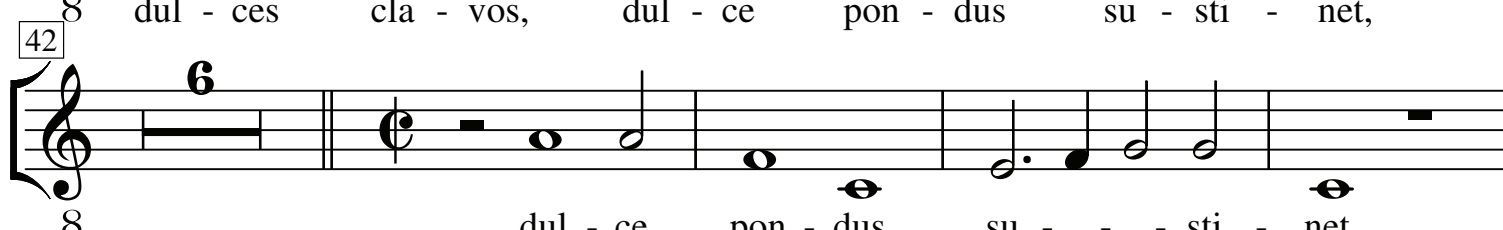
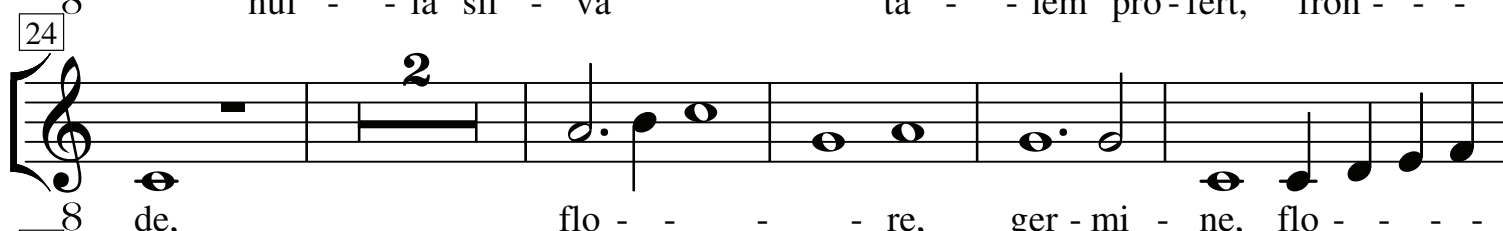
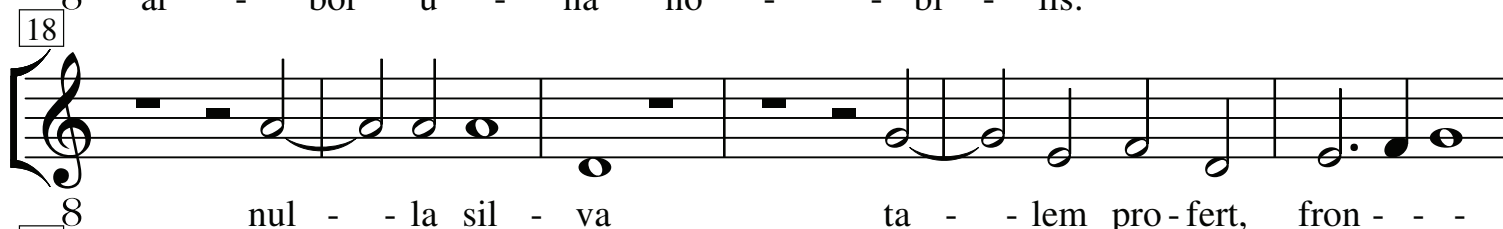
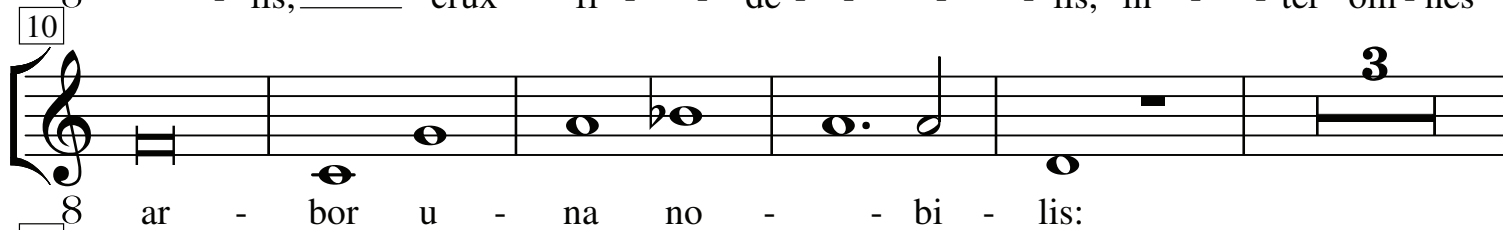
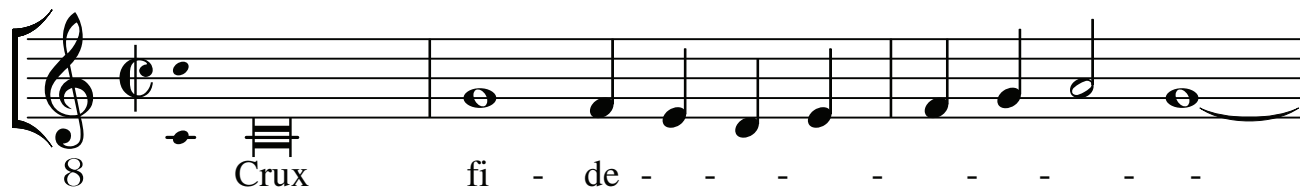
# CRUX FIDELIS à8

Original eine Quarte höher

Ruggiero Giovanelli

(c.1560- 1625)

## Basso I





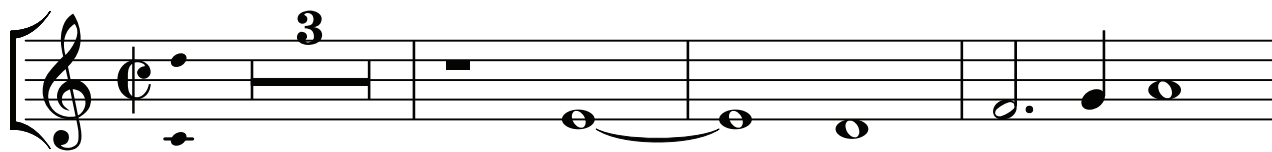
# CRUX FIDELIS à8

Original eine Quarte höher

Ruggiero Giovanelli

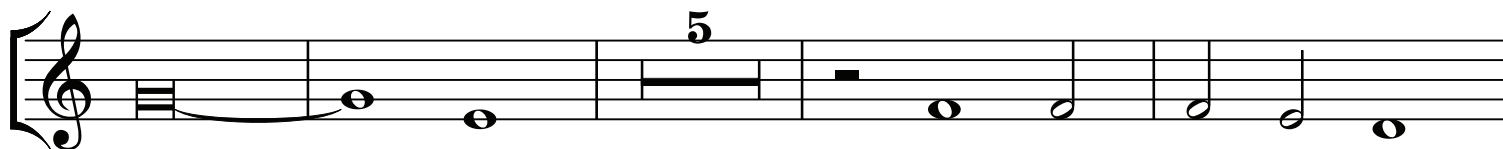
(c.1560- 1625)

## Canto II



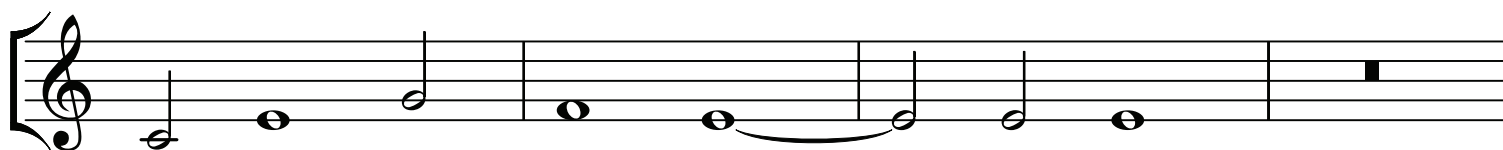
Crux \_\_\_\_\_ fi - de - - -

7



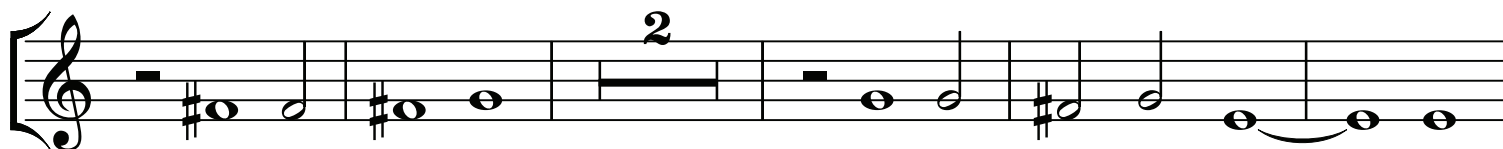
- - lis in - ter om - nes ar -

16



bor u - na no - - - - bi - lis:

20



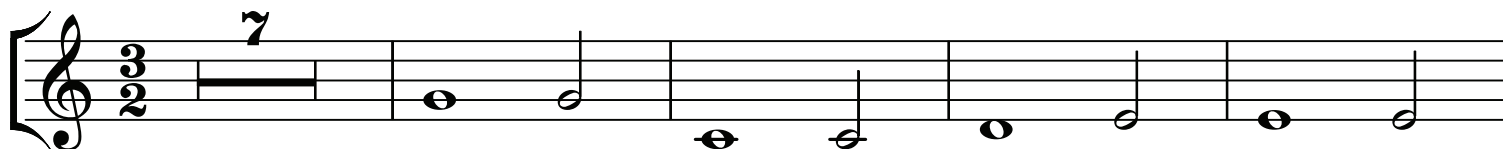
nul - la sil - va ta - lem pro - fert fron - - de,

27



flo - - - - - re, ger - mi - ne.

34



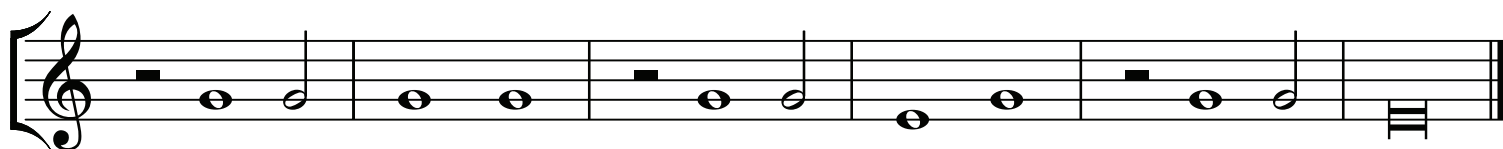
Dul - ce li - gnum, dul - ces cla - vos,

45



dul - ce pon - dus su - sti - net,

51



dul - ce pon - dus, dul - ce pon - dus su - sti - net.

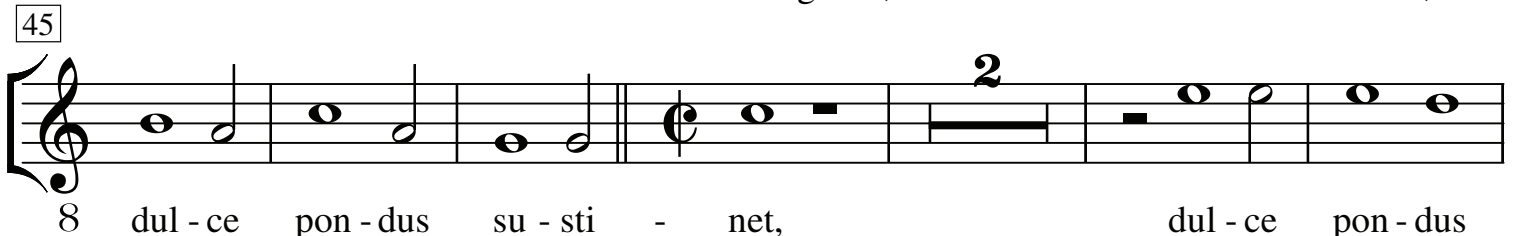
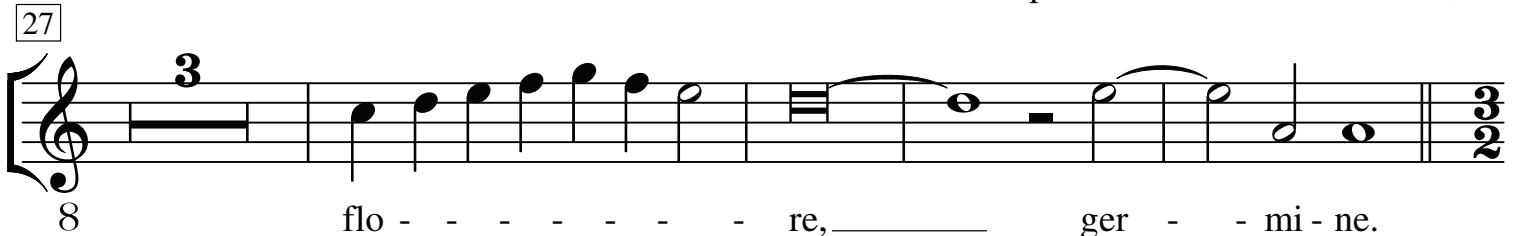
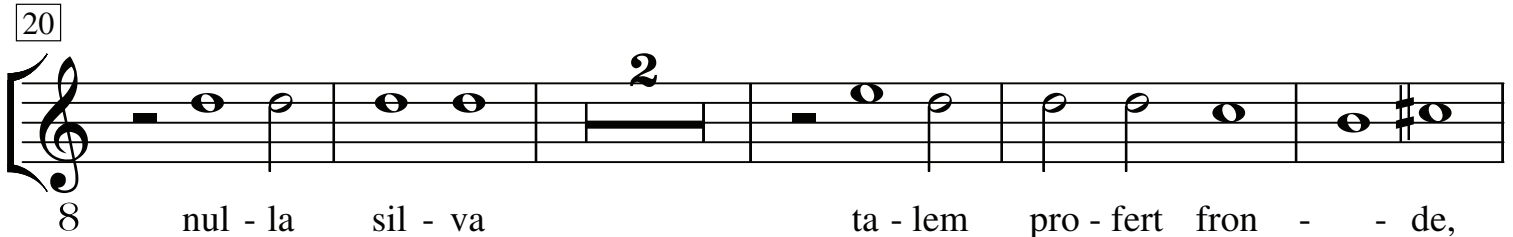
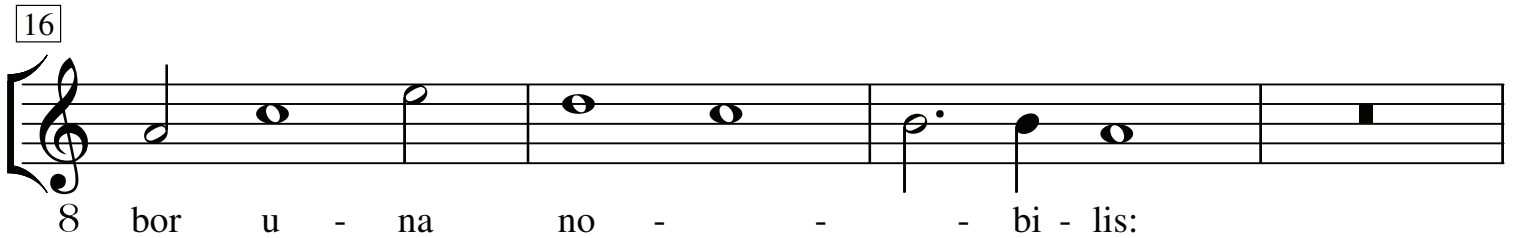
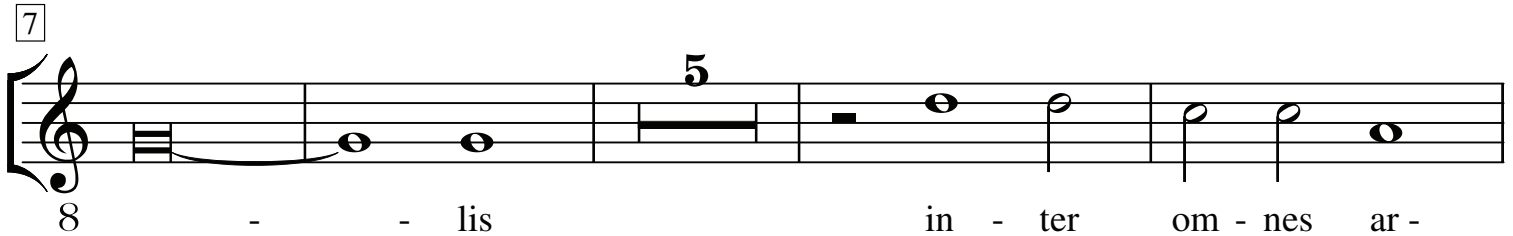
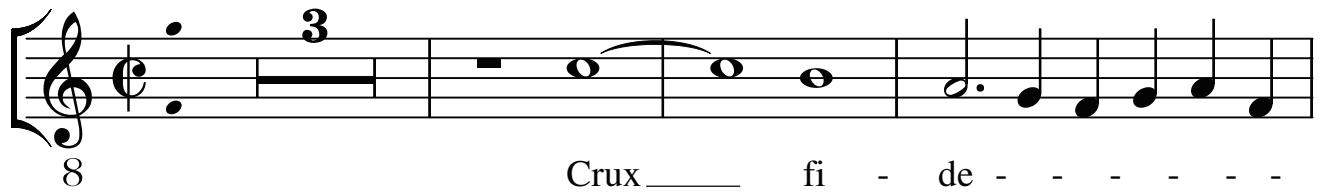
# CRUX FIDELIS à8

Original eine Quarte höher

Ruggiero Giovanelli

(c.1560- 1625)

Alto II



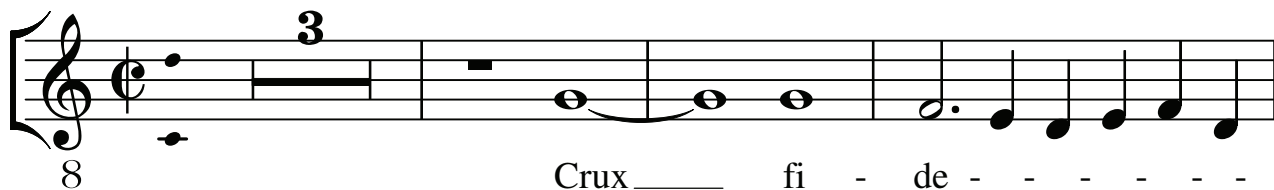
# CRUX FIDELIS à8

Original eine Quarte höher

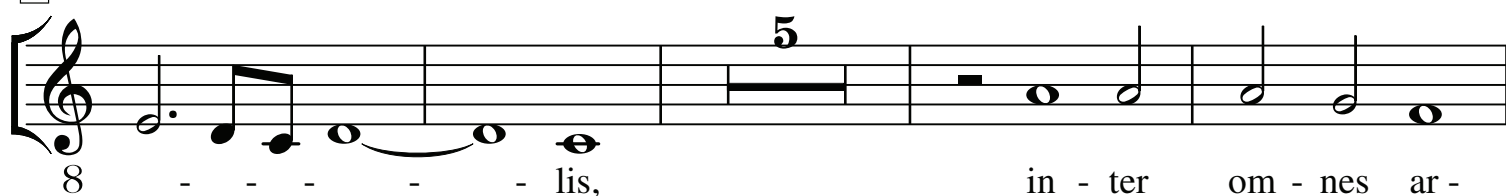
Ruggiero Giovanelli

(c.1560- 1625)

Tenor II



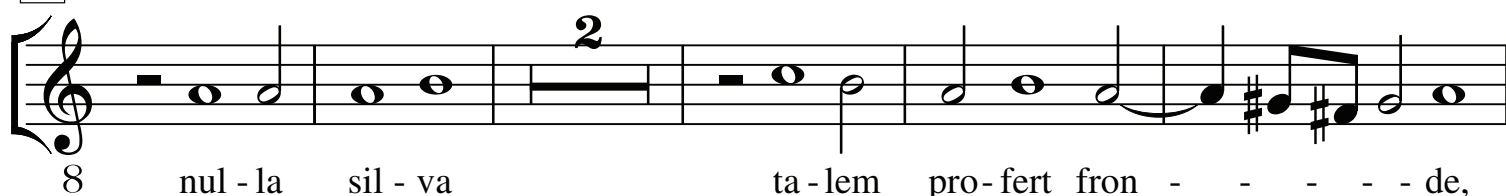
[7]



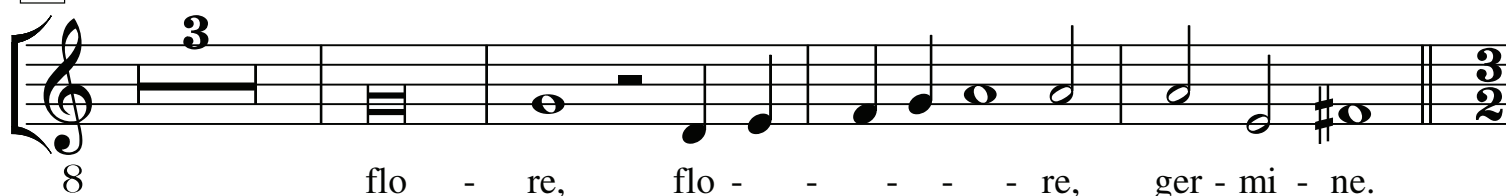
[16]



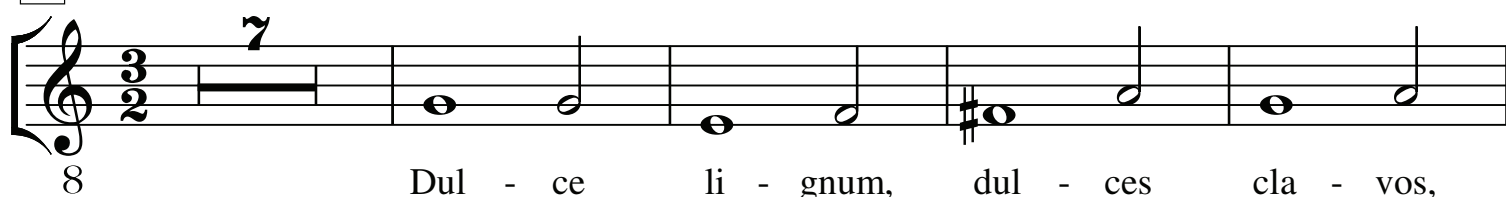
[20]



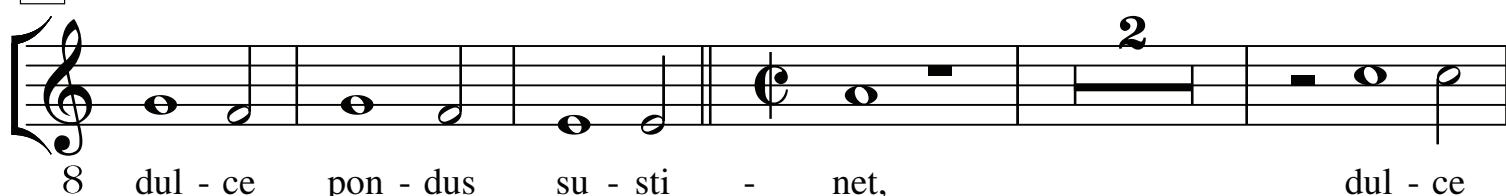
[27]



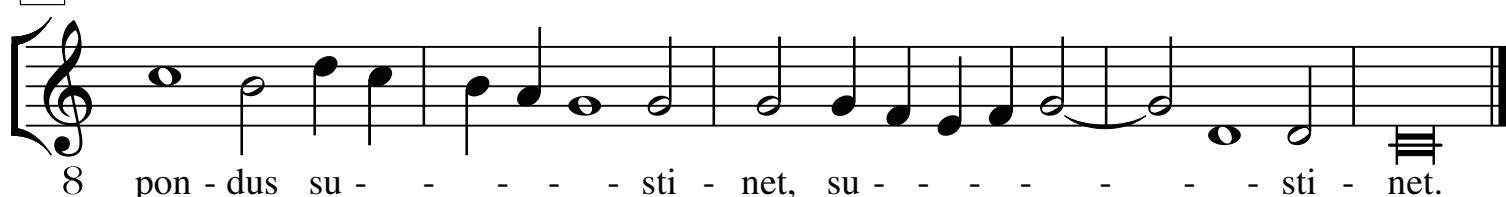
[34]



[45]



[52]



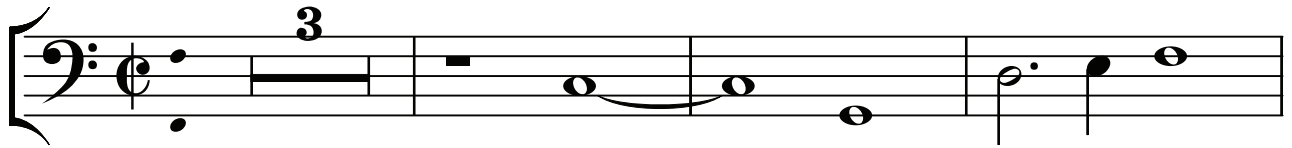
# CRUX FIDELIS à8

Original eine Quarte höher

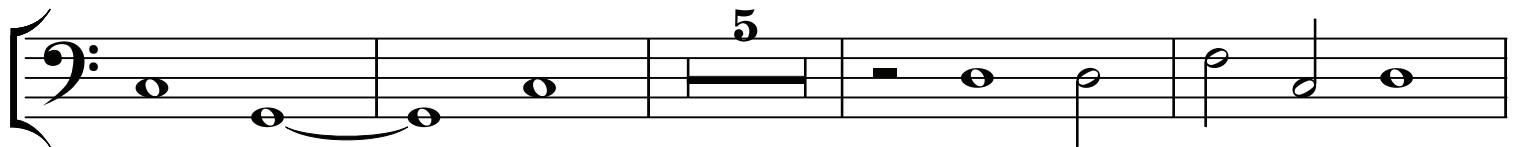
Ruggiero Giovanelli

(c.1560- 1625)

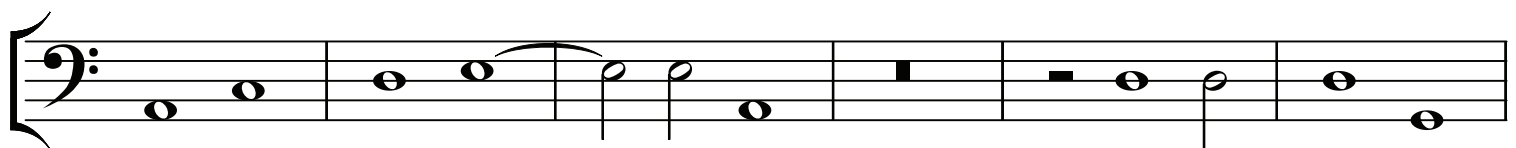
Basso II



7



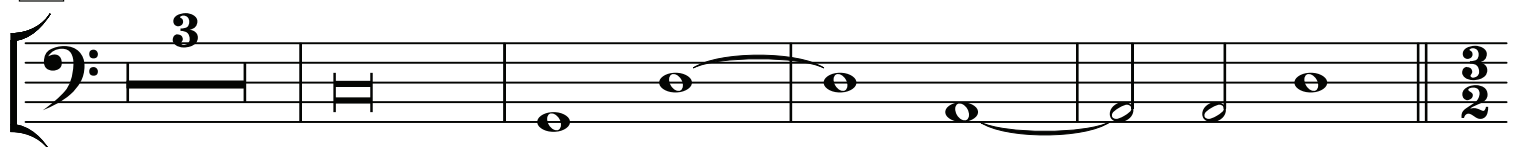
16



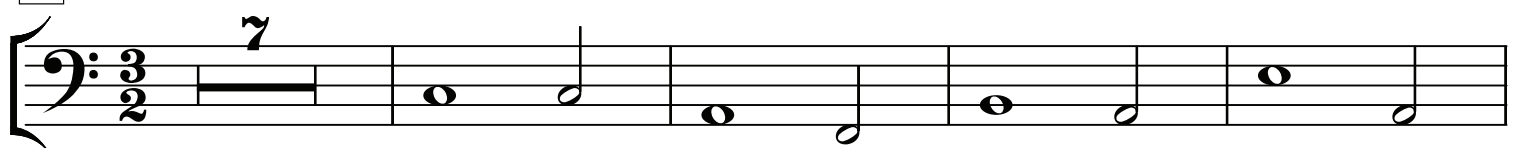
22



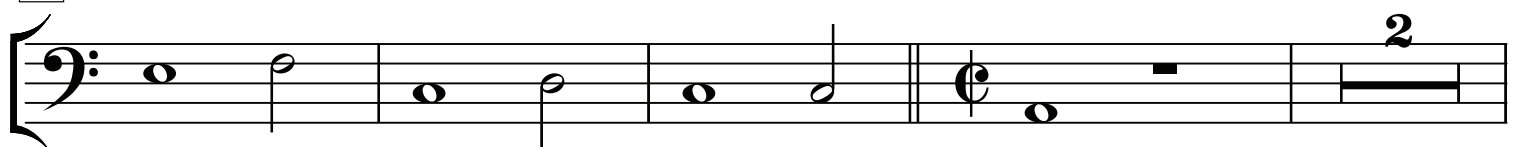
27



34



45



51

